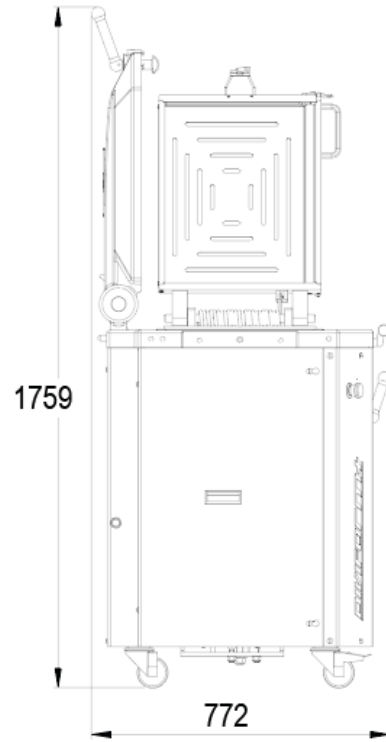
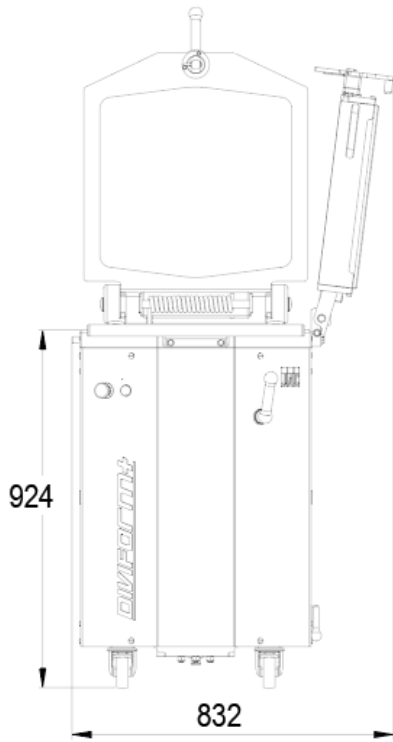


DIVIFORM+

- ✔ Modular solution with cutting-forming grids
- ✔ Quick, efficient execution
- ✔ Minimal space required
- ✔ Pressure plate
- ✔ Stainless steel exterior





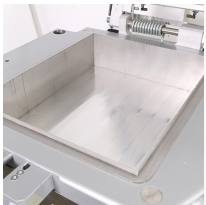
SPECIFICATIONS

Dimensions of tanks (L x W x H) in mm	460 x 387 x 125
Tank capacity in kg	5
Pressure plate	•
Usable with half grids	•
Supplied with a grid frame	•
Easylock	•
Motor power in kW	1.5
Net weight (in kg)	285

TECHNICAL SPECIFICATIONS

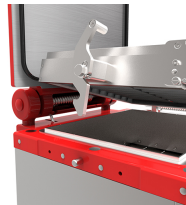
Power supply	230V single phase (ADDITIONAL COST),230V three-phase ,400V three-phase +N
Power frequency	50 Hz,60Hz (ADDITIONAL COST)
Options (Additional cost)	Fullmatic, Easyflour, Left or right side grid storage, Grid storage extension

MAIN STRENGTHS



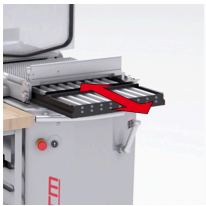
Stainless steel tank

For optimum hygiene and easy maintenance



Easylock

Automatic grid holder locking system On closing, the grid holder locks automatically and starts the automatic dividing cycle.



click&Cut

Quick grid changing system (JAC patent)



Fullmatic (option)

Automatic tamping and / or dividing cycles



Easyflour (option)

Built-in flour dispenser



Adjustable pressure (between 20 and 40 bars)

Prevents de-gassing of the different types of dough.