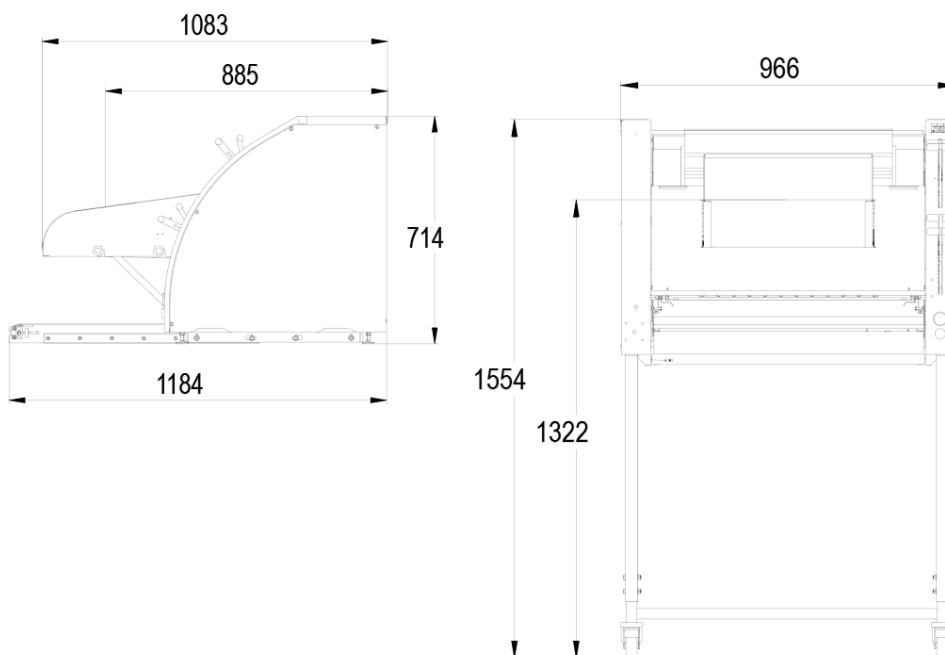


# FORMA

- ✓ Vertical moulding to save space
- ✓ Three rolling rollers
- ✓ Ergonomic controls
- ✓ Quick belt change
- ✓ Stainless steel exterior



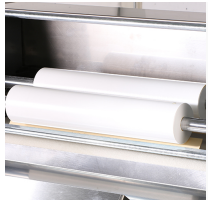
## SPECIFICATIONS

Min/max weight of dough pieces in grams	50 / 1200
Three food-grade PETP rollers	•
Maximum speed in pieces per hour	1200
Motor power in kW	1.1
Flat bread outfeed	•
Net weight in kg	230

## TECHNICAL SPECIFICATIONS

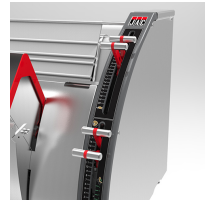
Power supply	230V single phase (ADDITIONAL COST),230V three-phase ,400V three-phase +N
Controls	Left,right
Belt type	Wool ,Whooltop ,Synthetic
Chute type	Manual loading,Automatic loading
Options (Additional cost)	Pointed end belt, Outfeed belt, Variable speed control, Motorised outfeed belt, Elastomer coated belt

## MAIN STRENGTHS



### Rollers

Three food-grade polyethylene rollers



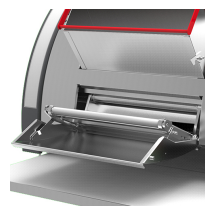
### Adjustable rollers

The levers provide a high degree of accuracy and reduces the load on the wrist.



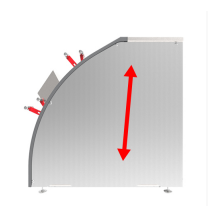
### Forming belt

Ultra-quick belt change without disassembling the machine.



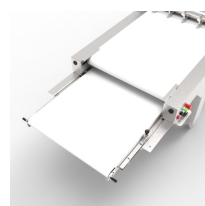
### Flat breads

Opening the front door allows you to roll flat breads.



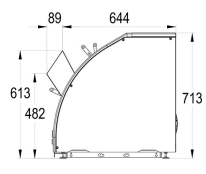
### Vertical moulding

Vertical moulding to save space



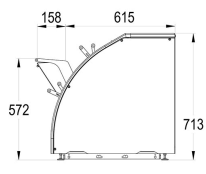
### Motorised outfeed belt (option)

Facilitates unloading



### Manual loading

Chute for manual loading



### Automatic loading

Chute for automatic loading