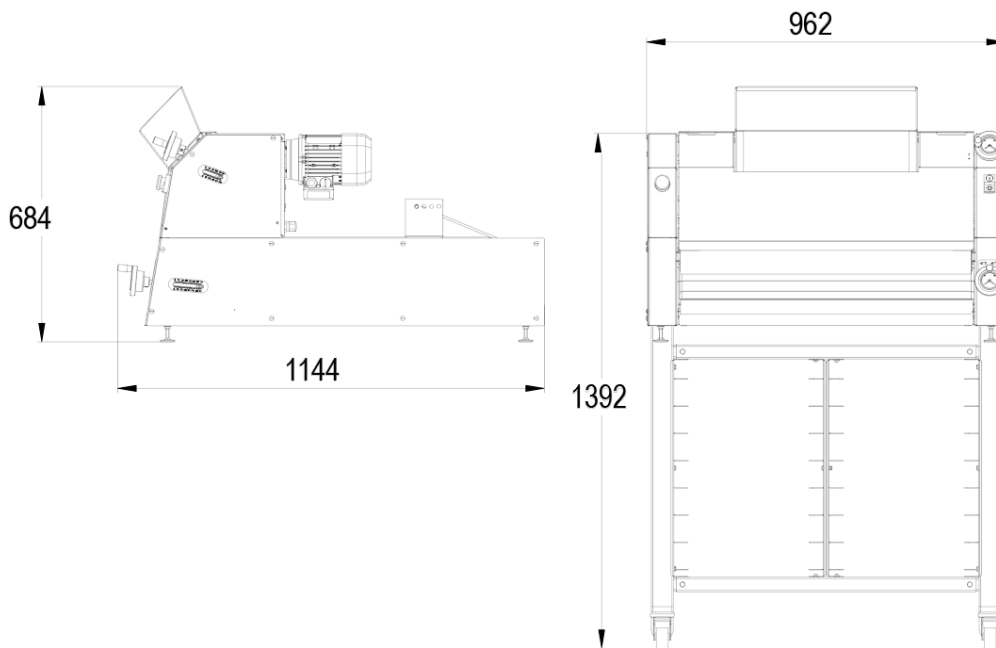
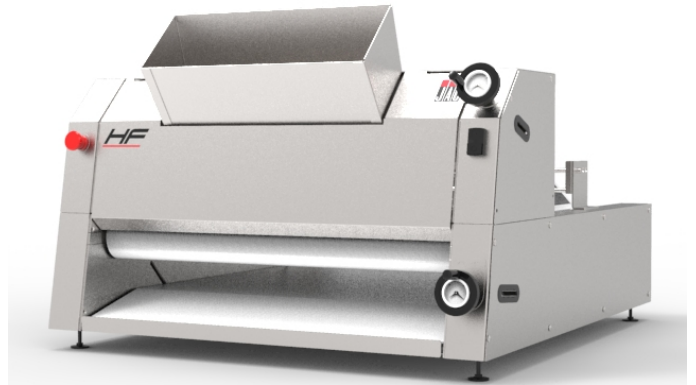


HF

- ✓ Horizontal moulding to take maximum care of the dough
- ✓ Strong pace
- ✓ Silent (-65dB)
- ✓ Stainless steel exterior



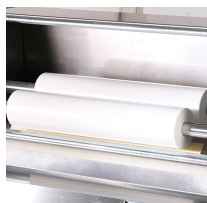
SPECIFICATIONS

Min/max weight of dough pieces in grams	50 / 1300
Two food-grade PETP rolling rollers	•
Maximum speed in pieces per hour	1800
Motor power in kW	0.37
Net weight in kg	180

TECHNICAL SPECIFICATIONS

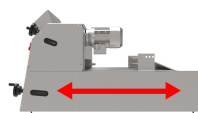
Power supply	230V single phase (ADDITIONAL COST),230V three-phase ,400V three-phase
Controls	Left,right
Belt type	Wool ,Whooltop ,Synthetic
Chute type	Manual loading,Automatic loading
Options (Additional cost)	Pointed end belt, Self-contained flour dispenser, Intake guides, Feeding belt, Pre-elongation module, Motorised outfeed belt (neutral requested in three-phase 400V), Elastomer coated belt, Formaster

MAIN STRENGTHS



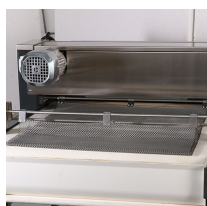
Rollers

Two food-grade polyethylene rollers



Horizontal moulding

Horizontal moulding to take maximum care of the dough



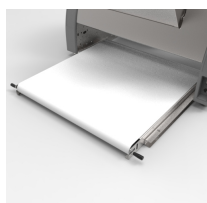
Progressive elongation

Thanks to the chain mail



Ergonomy

Ergonomic, accurate indicators



Motorised outfeed belt (option)

Facilitates unloading.