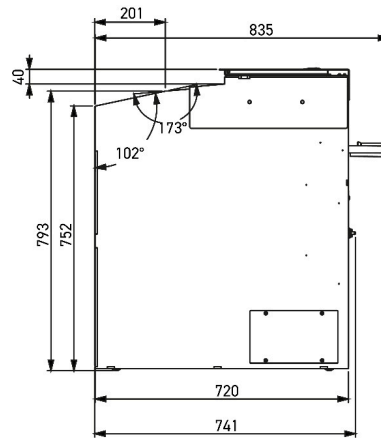
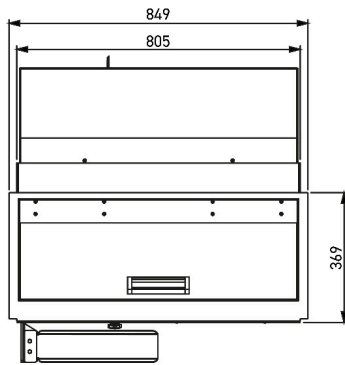
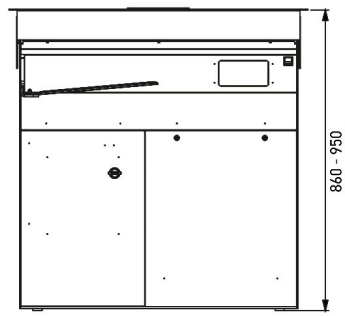


Bread slicers for professionals

# Integra<sup>pro</sup>

- ✓ Design: perfect integration into the counter
- ✓ Versatile
- ✓ Fast: Adjustable speed from up to 240 slices / min
- ✓ Easy: Intuitive touch interface
- ✓ Maximum safety
- ✓ Exemplary hygiene

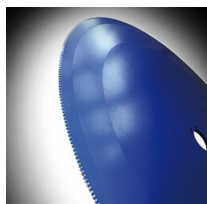




## SPECIFICATIONS

Size of entry channel (L x W x H) in cm	38 x 34 x 16
Slice thickness in mm	Can be set from 5 to 25mm
Power supply	220V single-phase
Motor power in kW	0.75
Net weight (in kg)	230
Manual claw	•
Blade type and dimensions in mm	420 mm diameter, Teflon-coated
Options (Additional cost)	Automatic claw, Bag holder, Rustic bread holder

## MAIN STRENGTHS



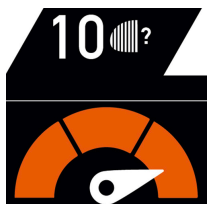
### Smooth and quiet for all breads

New engine generation designed for maximum precision on a wide range of breads, without lubrication. Soft start and stop function.



### Teflon coated circular blade

Developed to cut through a large variety of breads; from soft to dense, with a hard crust, and even sticky breads.



### Adjustable speed up to 240 slices/ minute

In order to reach the fastest possible speed for each bread type.



### Planetary blade drive

Fluid blade movement, avoids back-and-forth shakes. Robust solution for long-term mechanical reliability.



### Automatic grip (option)

Just place the bread and the machine does the rest while you continue to serve your customers.



### Manual grip

For all kinds of breads, including sharp ends. Allows to minimize last slice width.



### Easy to access power switch

Accessible from the front of the machine, but not visible; avoids operations by a non-authorized person.



### Maximum safety

Highest safety standards, for machine use by consumers and staff. The blade cannot run when the machine is not 100% locked.



### Easy & fast cleaning

Internal architecture designed to channel bread crumbs to an easily accessible crumb tray. Flat surfaces (without recess around).



### Intuitive touch interface

Clear and simple interface, for an immediate and intuitive use



#### **BPA-free paint**

100% BPA-free satin paint (Bisphenol A): safer for you, gentler on the planet. Its low-temperature curing process significantly reduces energy consumption. Available in three solid colours: white, black or grey.