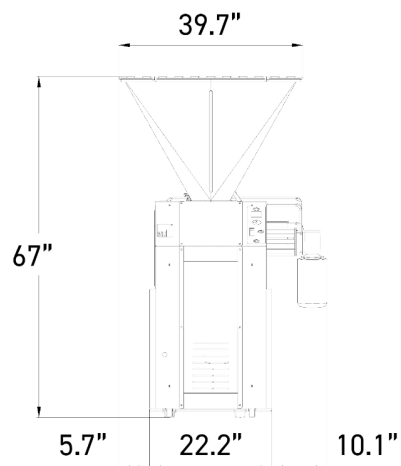
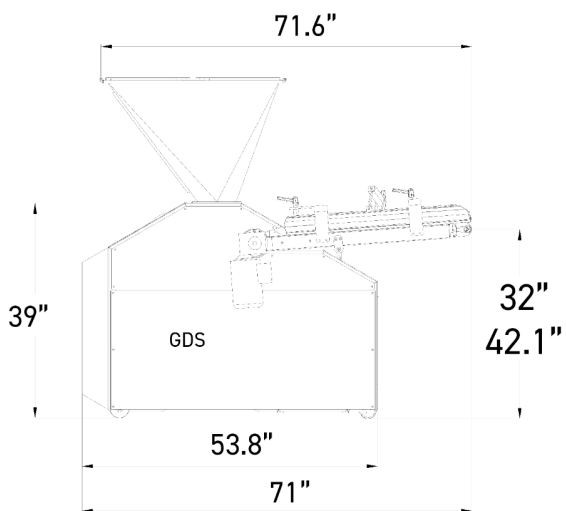




- ✓ Open hopper volumetric divider
- ✓ Stainless steel exterior
- ✓ Consistently accurate scaling
- ✓ High volume
- ✓ Built-in flour dispenser
- ✓ Pre-rounding of dough pieces
- ✓ 5 years parts / 1 year labor warranty



SPECIFICATIONS

Adjustable speed in pieces per hour	960 - 2000
Teflon-coated hopper. capacity in ounces	4230 oz
Capacity in pounds	260 lbs
Programmable counter. countdown counter	•
Stainless steel drum	•
Triple-seal Rilsan piston	•
Stainless steel exterior	•
3-litre flour dispenser	•
Outfeed belt width in in	19.7"
Outfeed belt scraper	•
Adjustable pre-rounding tile	•
Oil recycling system	•
Motor power in kW	2.2
Type of motor	3ph/208V/60Hz/4.7A
Net weight in lbs	1270

TECHNICAL SPECIFICATIONS

Piston size (Min/max weight of dough pieces in ounces)	3.14" (1 / 13 oz), 3.94" (1.7 / 24.7 oz), 4.33" (2.47 / 30 oz), 4.72" (3.2 / 35.3 oz), 5.12" (4.6 / 45.8 oz)
Options (Additional cost)	Dough piece lubrication, 440lb capacity Teflon-coated stainless steel hopper, Extracting dough pieces device (as standard on 3.14" piston and 3.94" piston), Dough piece rolling belt

MAIN STRENGTHS



Outfeed belt scraper

The belt is kept clean throughout use.



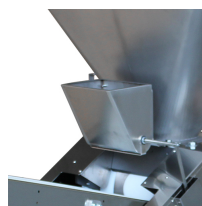
Oil recycling system

Reduces oil consumption. Fitted with a filter and a low level alert.



Adjustable pre-rounding tile

For pre-rounding dough pieces with different weights.



Built-in flour dispenser (option)

Prevents the dough pieces from sticking to the belt.



Farineur

JAC a développé un tout nouveau farineur intégré plus efficace avec un débit plus régulier. Il équipe dès à présent les GD et GDS de série.