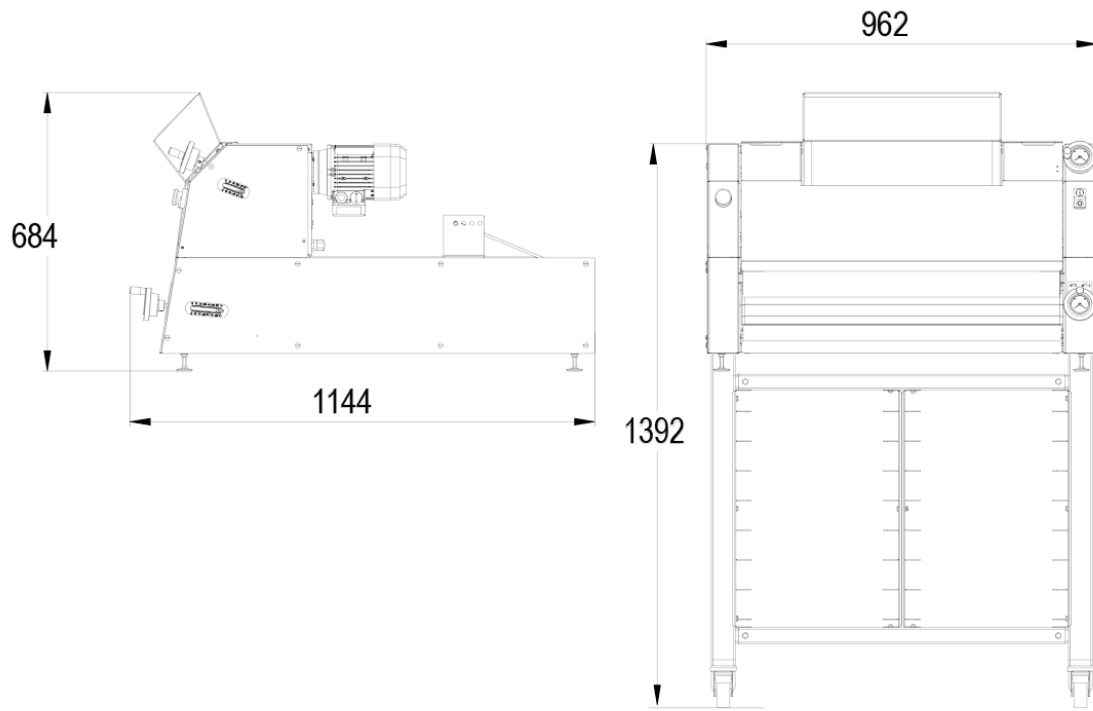


HF

- ✓ Horizontal moulding to take maximum care of the dough
- ✓ Strong pace
- ✓ Silent (-65dB)
- ✓ Stainless steel exterior





SPECIFICATIONS

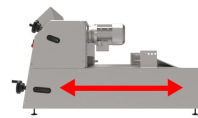
MIN/MAX WEIGHT OF DOUGH PIECES IN OUNCES	1.76 / 42.3 OZ
THREE FOOD-GRADE PETP ROLLERS	•
MAXIMUM SPEED IN PIECES PER HOUR	1800
MOTOR POWER IN KW	1.1
TYPE OF MOTOR	3PH/208V/60HZ/4.8A
BELT TYPE	SYNTHETIC
NET WEIGHT IN LBS	440

MAIN STRENGTHS



Rollers

Two food-grade polyethylene rollers



Horizontal moulding

Horizontal moulding to take maximum care of the dough



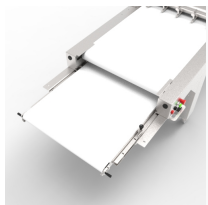
Progressive elongation

Thanks to the chain mail



Ergonomy

Ergonomic, accurate indicators



Tapis évacuation extractible (option)

Facilite le déchargement



Plug Configuration

NEMA L15-20P



Partners

JAC is a member of these different associations

