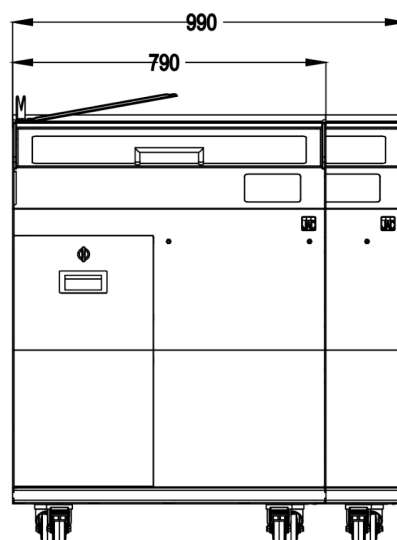
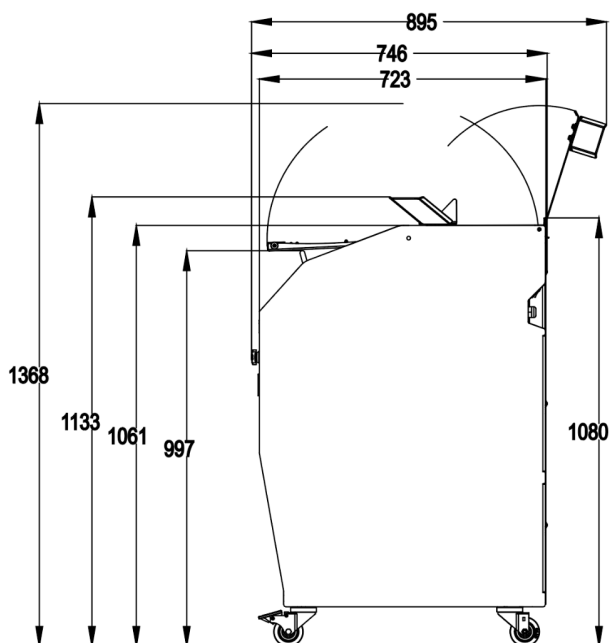


# VARIA

- ✓ Versatile
- ✓ Fast: Varia pro: Adjustable speed from 120 to 240 slices / min, Varia self: 180 slices / min
- ✓ Easy: Intuitive touch screen
- ✓ Maximum safety
- ✓ Exemplary hygiene



## SPECIFICATIONS

Size of entry channel (L x W x H) in inches	14,9'' x 13,4'' x 6,3''
Slice thickness in mm	Can be set from 5 to 25mm
Power supply	208-230v/1ph
Motor power in kW	0.75
Net weight in lbs	507
Blade type and dimensions in inches	16,5'' diameter, Teflon-coated
Automatic claw	•
10 cm Front bagging stand	•
Bag holder	•
Led lights	•
Dual Pro & Self touch screen controls	•
Upper cover	•
Cleaning position	•

Options (Additional cost)	Automatic claw
---------------------------	----------------

## MAIN STRENGTHS



### Smooth and quiet for all breads



### Teflon coated circular blade

Developed to cut through a large variety of breads; from soft to dense, with a hard crust, and even sticky breads.



### Adjustable speed up to 240 slices/ minute

In order to reach the fastest possible speed for each bread type.



### Planetary blade drive

Fluid blade movement, avoids back-and-forth shakes. Robust solution for long-term mechanical reliability.



### Touch screen interface

Clear and simple interface, for an immediate and intuitive use.



### Touchscreen control interface with consumer instructions

Clear and simple interface, for immediate and intuitive use. Only available with touch interface choice.



**Automatic grip (option)**

Minimized last slice width.



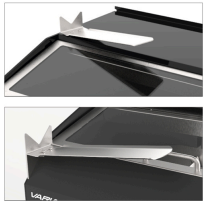
**Manual grip**

For all kinds of breads, including sharp ends. Allows to minimize last slice width.



**Lighting guidance and ambiance**

Lights insertion zone then exit zone.



**Multi-positions adjustable bagging spade**

Rotating spade, above cutting chamber, to optimize ergonomics and hygiene. Two standard (left and right) bagging spade positions. Or non-rotating front position (option).



**Upper cover**

Prevents objects placed on the machine (e.g. bags) to be pushed inadvertently behind the machine when opening the front cover. Rotates for easy cleaning.



**Easy to access power switch**

Accessible from the front of the machine, but not visible; avoids operations by a non-authorized person.



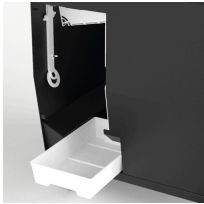
**Maximum safety**

Highest safety standards, for machine use by consumers and staff. The blade cannot run when the machine is not 100% locked.



**Anti-pinch design**

Users cannot inadvertently pinch their fingers in the front cover sliders.



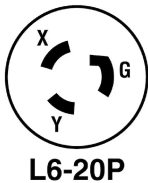
**Easy & fast cleaning**

Internal architecture designed to channel bread crumbs to an easily accessible crumb tray. Flat surfaces (without recess around).



**Partners**

JAC is a member of these different associations



**Plug configuration**

NEMA L6-20P